

ECLIPSE GAS PILOTS

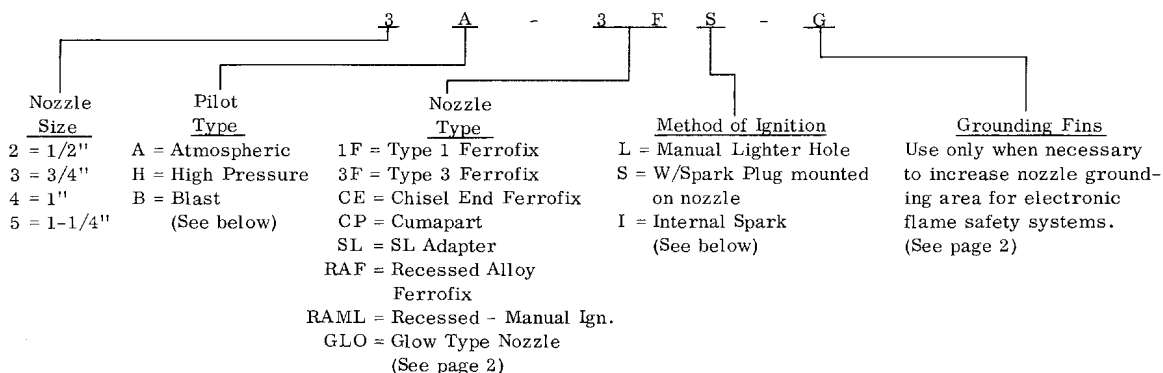
There is an Eclipse Gas Pilot available for use with virtually any type of industrial burner. Pilot nozzles only, for use with separate gas/air mixers, are shown on page 2. Complete pilot assemblies, including a gas/air mixer, are shown on Specification Sheets P-80-B. Extended, Swivel, and Draft Compensating Pilots are covered by Bulletins P-82 through P-86.

Complete pilot assemblies are available in atmospheric types for either low pressure gas (4" w.c. to 3 PSIG) or high pressure gas (3 PSIG and above). Blast pilot assemblies utilize air from a low-pressure blower (4 oz. to 32 oz.) and low pressure gas (4" w.c. to 15" w.c.). Typical pilots of each type are illustrated below, left.

Ignition methods are either manual or electric as shown below, right.

Pilot assembly catalog numbers indicate pilot type, nozzle type and pipe size, method of ignition, and whether or not grounding fins are included on the pilot nozzle. The pilot numbering system is explained below.

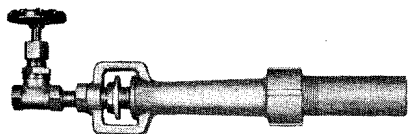
Pilot selection chart P-80-A makes it an easy matter to select the correct pilot assembly for Eclipse burners. Reference is made to a specification sheet on which you will find dimensional information and a bill of materials on the pilot assembly selected.



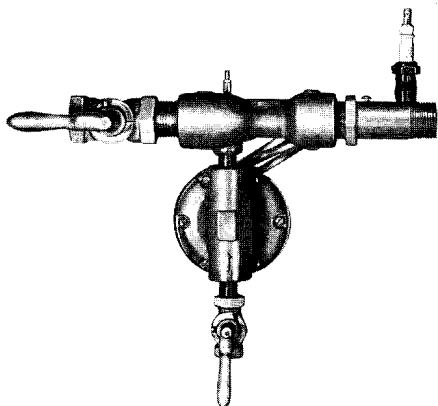
PILOT TYPES



Atmospheric (A)

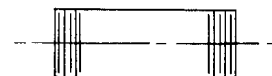


High Pressure (H)

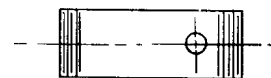


Blast (B)

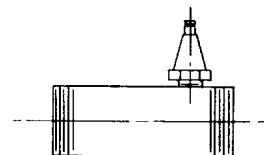
IGNITION METHODS



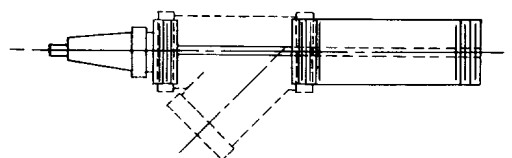
Manual



Manual Lighter Hole (L)



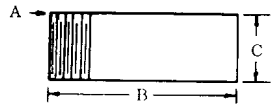
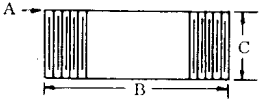
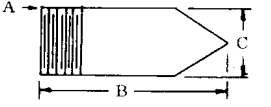
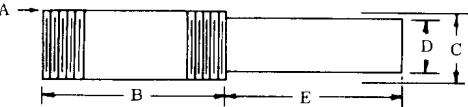
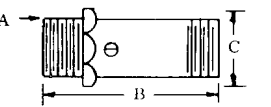
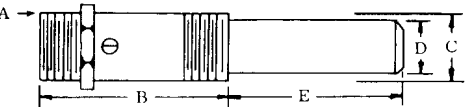
Spark Ignition (S)



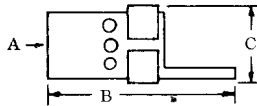
Internal Spark Ignition (I)



PILOT NOZZLES

CATALOG NO.			PIPE SIZE "A"	PORT AREA	CAPACITY - BTU/HR. @ MIXT. PRESS. - IN. W.C.			DIMENSIONS			
MANUAL	LIGHTER HOLE	SPARK IGNITION			2	6	12	B	C	D	E
			FERROFIX - TYPE 1 (F-1)								
1F-1	-----	-----	3/8	.037	7,000	12,000	17,000	3	11/16	-----	-----
2F-1	-----	-----	1/2	.0895	17,000	30,000	42,000	3	27/32	-----	-----
3F-1	-----	-----	3/4	.1652	35,000	60,000	85,000	3	1- 1/16	-----	-----
4F-1	-----	-----	1	.2907	58,000	100,000	141,000	3-1/2	1- 5/16	-----	-----
			FERROFIX - TYPE 3 (F-3)								
2F-3	2F-3L	2F-3S	1/2	.0895	17,000	30,000	42,000	3	27/32	-----	-----
3F-3	3F-3L	3F-3S	3/4	.1652	35,000	60,000	85,000	3	1- 1/16	-----	-----
4F-3	4F-3L	4F-3S	1	.2907	58,000	100,000	141,000	3-1/2	1- 5/16	-----	-----
			FERROFIX - CHISEL END (CE)								
3CE	-----	-----	3/4	.1652	35,000	60,000	85,000	4-3/8	1-1/16	-----	-----
4CE	-----	-----	1	.2907	58,000	100,000	141,000	5-3/8	1-5/16	-----	-----
			RECESSED FERROFIX (RAF)								
-----	-----	3RAF-1-3/4	3/4	.0895	17,000	30,000	42,000	2-1/4	1-1/16	7/8	1-3/4
-----	-----	4RAF-2	1	.1652	35,000	60,000	85,000	2-3/8	1-5/16	1	2
-----	-----	4RAF-4	1	.1652	35,000	60,000	85,000	2-3/8	1-5/16	1	4
-----	-----	5RAF-4-1/2	1-1/4	.2907	58,000	100,000	141,000	2-3/8	1-5/8	1-1/4	4-1/2
			CUMAPART (CP)								
1CP	1CPL	1CPS	3/8	.0207	5,000	8,000	11,000	2-21/32	11/16	-----	-----
2CP	2CPL	2CPS	1/2	.0391	8,000	14,000	20,000	2-31/32	1- 5/32	-----	-----
3CP	3CPL	3CPS	3/4	.0920	20,000	34,000	48,000	2-31/32	1- 7/16	-----	-----
4CP	4CPL	4CPS	1	.1656	35,000	60,000	85,000	3- 9/32	1-11/16	-----	-----
			GLOW (GLO)								
-----	3GLOL-1-3/4	3GLOS-1-3/4	3/4	.0903	17,000	30,000	42,000	4-7/8	1-1/16	7/8	1-3/4
-----	3GLOL-2	3GLOS-2	3/4	.0903	17,000	30,000	42,000	4-7/8	1-1/16	7/8	2
-----	3GLOL-4	3GLOS-4	3/4	.0903	17,000	30,000	42,000	4-7/8	1-1/16	7/8	4

SL HEAD (SL)



Use with 3F-3 or 3CP above for Extended Cage Burners (Bull. H-9, H-12, H-13, H-70)

Manual	Spark Ignition	Pipe Size A	Dimensions	
			B	C
SL-A	SLS-A	3/4	4-1/4	1-13/16
SL-B	SLS-B	3/4	3-3/4	1-13/16

GROUNDING FINES (-G)



Grounding fins are optional on F-1, F-3, CP and RAF nozzles above to increase nozzle-grounding area for electronic flame safety systems. Add "-G" to end of pilot catalog number to indicate grounding fins.



Eclipse Combustion

Litho in U.S.A.



Offered By:

Power Equipment Company
2011 Williamsburg Road
Richmond, Virginia 23231
Phone (804) 236-3800
Fax (804) 236-3882

www.peconet.com